

HOTEL  
PALACE  
BERLIN

LEADING  
HOTELS

*We have the ideal venue for every event!*





## TIME FOR BERLIN

*Truly centrally located in the pulsating metropolis between Ku'damm and Zoological Garden, not far away from the fair as well as the Brandenburg Gate, the Hotel Palace Berlin offers an allround business service.*

*With 2.400 sqm of event space and 17 function rooms, 16 with daylight, this business hotel provides the perfect setting for any kind of event - whether you're hosting a high quality conference with 900 guests in the ballroom or an exclusive dinner. Benefit from our experi-ence as a hotel specialising in business events and gourmet food; avail yourself of our professionalism and creativity: Gourmet Catering by Hotel Palace Berlin.*



### AT A GLANCE

*2.400 sqm of event space | 17 flexibly combina-ble function rooms, 16 with daylight | capacities up to 1.000 persons | largest function room 955 sqm | ballroom with 5 m ceiling height | catering service up to 1.500 persons*

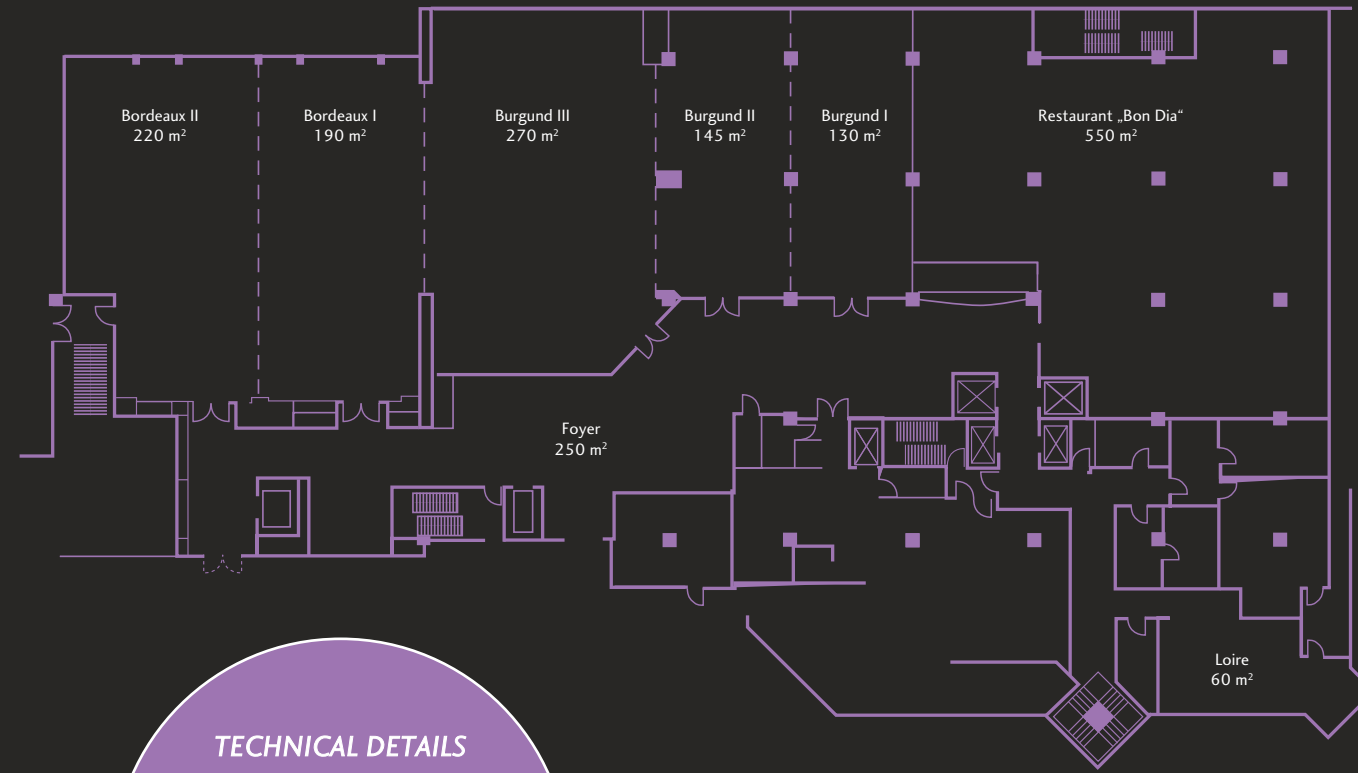




### COUNTLESS OPPORTUNITIES

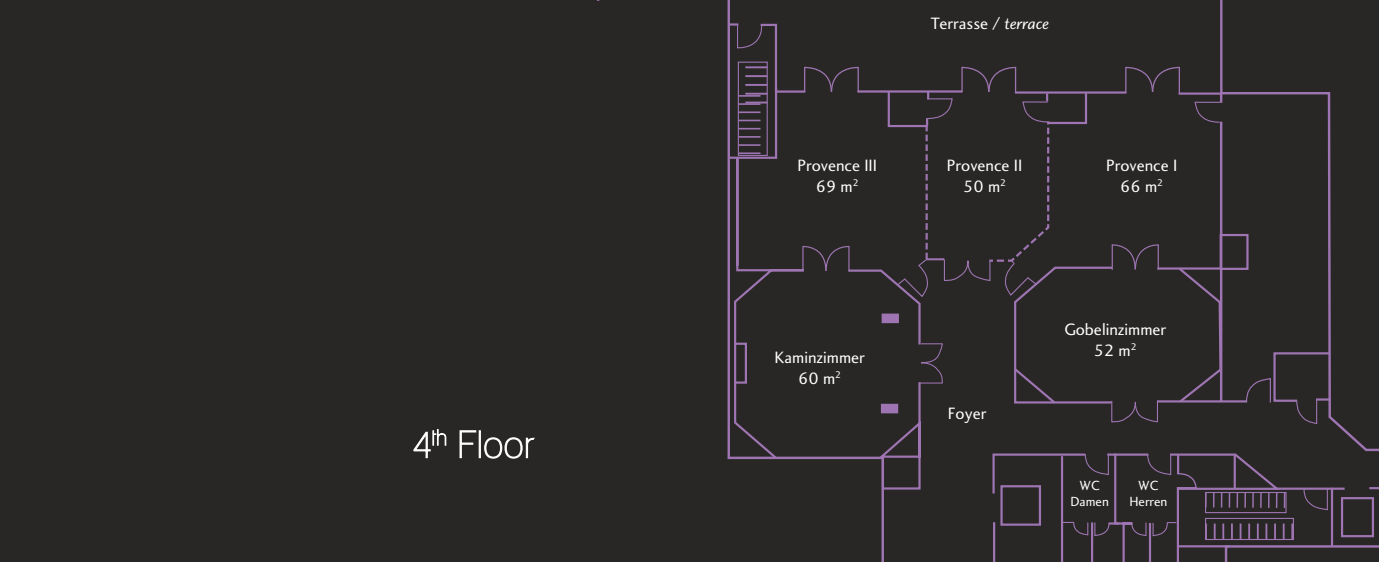
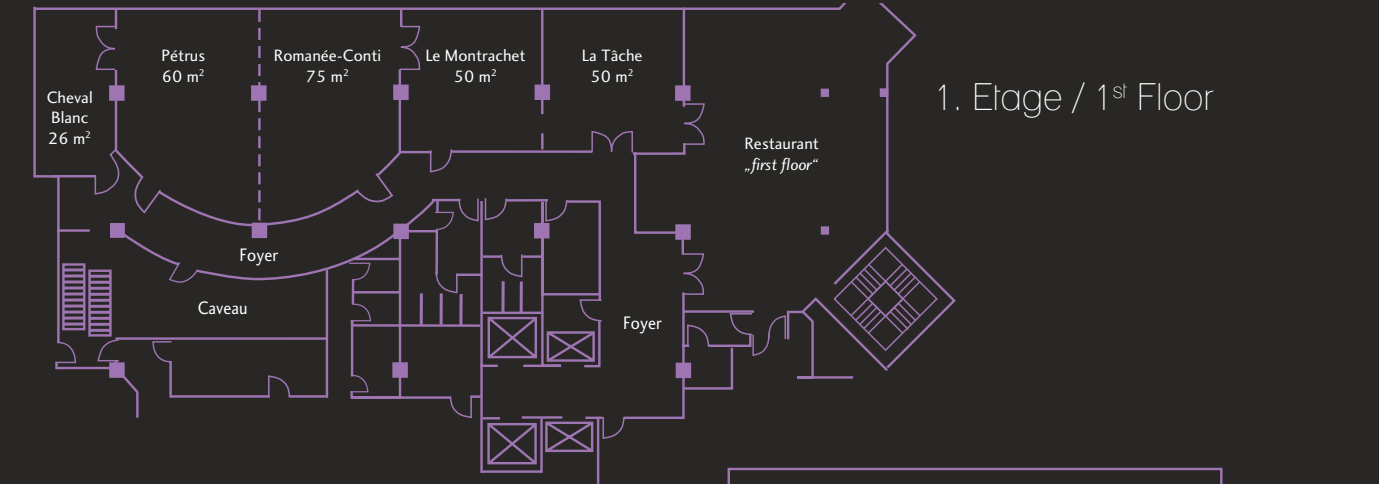
For your congress, special event or gala dinner – for 10, 100 or 1.000 guests, our 2.400 sqm convention facilities in the heart of Berlin offer countless opportunities for every occasion.

Our experienced and creative convention team orchestrates flawless events, no rehearsal necessary. You're the director, we take care of the rest. After all, top-class events belong in good hands, and hosted at the heart of the capital.



**TECHNICAL DETAILS**

Dimming in all rooms | Air-conditioning | State-of-the-art conference & presentation technology | W-LAN Internet access



Raum / Room	Netto-Fläche / Net Size	Stuhlreihen / Theatre Style	Parlament breit / Classroom wide	Parlament schmal / Classroom slim	Bankett Runde Tische 1.83m / Banquet Round Tables	Bankett Runde Tische 1.52m / Banquet Round Tables	Kabarett / Cabaret	Block / Board-room	U-form / U-shape	Empfang / Reception
Salon Loire	60 m <sup>2</sup>	80	24	30	30	32	18	24	24	80
Salon Burgund I	130 m <sup>2</sup>	160	48	66	90	88	42	46	40	100
Salon Burgund II	145 m <sup>2</sup>	160	48	66	90	88	42	46	40	120
Salon Burgund III	270 m <sup>2</sup>	250	123	180	200	172	120	72	68	300
Salon Burgund I+II	275 m <sup>2</sup>	200	102	168	200	220	120	46	50	260
Salon Burgund II+III	415 m <sup>2</sup>	400	180	250	300	260	180	60	69	420
Salon Burgund I-III	545 m <sup>2</sup>	440	219	279	360	342	216	45	90	600
Salon Bordeaux I	190 m <sup>2</sup>	220	96	138	150	160	90	72	66	250
Salon Bordeaux II	220 m <sup>2</sup>	200	96	126	160	172	96	45	50	200
Salon Bordeaux I+II	410 m <sup>2</sup>	450	207	285	340	320	204	66	68	500
Burgund III + Bordeaux I+II	680 m <sup>2</sup>	700	315	450	540	480	324	102	102	700
Burgund II+III + Bordeaux I+II	825 m <sup>2</sup>	800	363	500	620	590	372	120	120	900
Burgund I-III + Bordeaux I+II	955 m <sup>2</sup>	900	411	564	700	688	420	168	168	1000
Foyer	250 m <sup>2</sup>	---	---	---	---	---	---	---	---	500
Restaurant Bon Dia	550 m <sup>2</sup>	---	---	---	---	250	---	---	---	---

Raum / Room	Netto-Fläche / Net Size	Stuhlreihen / Theatre Style	Parlament breit / Classroom wide	Parlament schmal / Classroom slim	Bankett Runde Tische 1.83m / Banquet Round Tables	Bankett Runde Tische 1.52m / Banquet Round Tables	Kabarett / Cabaret	Block / Board-room	U-form / U-shape	Empfang / Reception
Salon Provence I	66 m <sup>2</sup>	50	27	36	30	32	24	22	22	50
Salon Provence II	50 m <sup>2</sup>	30	18	24	20	24	18	20	20	30
Salon Provence III	69 m <sup>2</sup>	50	24	33	30	32	24	26	20	40
Salon Provence I + II	116 m <sup>2</sup>	80	45	54	60	64	42	36	30	80
Salon Provence II + III	119 m <sup>2</sup>	81	45	54	60	64	42	36	30	80
Salon Provence I-III	185 m <sup>2</sup>	130	81	90	120	104	66	54	48	150
Gobelinzimmer	52 m <sup>2</sup>	---	---	---	---	---	---	20	---	---
Kaminzimmer	60 m <sup>2</sup>	---	---	---	---	---	---	20	---	---
Terrasse / Terrace	114 m <sup>2</sup>	---	---	---	---	---	---	---	---	100
Salon La Tâche	50 m <sup>2</sup>	40	18	18	30	32	---	14	15	40
Salon Le Montrachet	50 m <sup>2</sup>	55	27	36	30	32	18	20	18	40
Salon Cheval Blanc	26 m <sup>2</sup>	25	12	12	10	16	---	14	---	20
Salon Romanée-Conti	75 m <sup>2</sup>	70	36	39	40	40	24	25	24	50
Salon Pétrus	60 m <sup>2</sup>	70	24	32	30	32	18	25	27	50
Salon Romanée-Conti / Pétrus	135 m <sup>2</sup>	120	60	70	80	80	42	48	48	110
Salon 01	12 m <sup>2</sup>	---	---	---	---	5	---	---	---	---





**LOCATION:**

*Kurfuerstendamm: 0.2 km | Zoological Garden: 0.3 km | Potsdamer Platz: 2.8 km | Brandenburg Gate: 3 km | fair: 3.5 km  
 | main train station: 5.5 km | Airport TXL: 8 km | Airport SXF: 21 km | Urban Rail: 0.4 km | Metro line: 0.4 km*

**HOTEL:**

*238 rooms and 40 suites | 24 hour room service | exclusive Club Lounge with skyline view | air conditioning | free WiFi in the lobby & rooms | tea/coffee station | minibar | safe | parking garage | concierge service | business center | smokers lounge*

**RESTAURANTS & BARS:**

*Breakfast restaurant with 240 seats | Lobby Lounge with a sophisticated menu | gourmet restaurant "first floor" with modern European haute cuisine | House of Gin – bar with 150 varieties of gin*

**WELLNESS & FITNESS:**

*800 sqm Palace SPA with pool, whirlpool, lavish sauna area, ice grotto, massages, modern fitness facilities*

